



DARWIN D. WEBB  
CERTIFICATE NO. 564

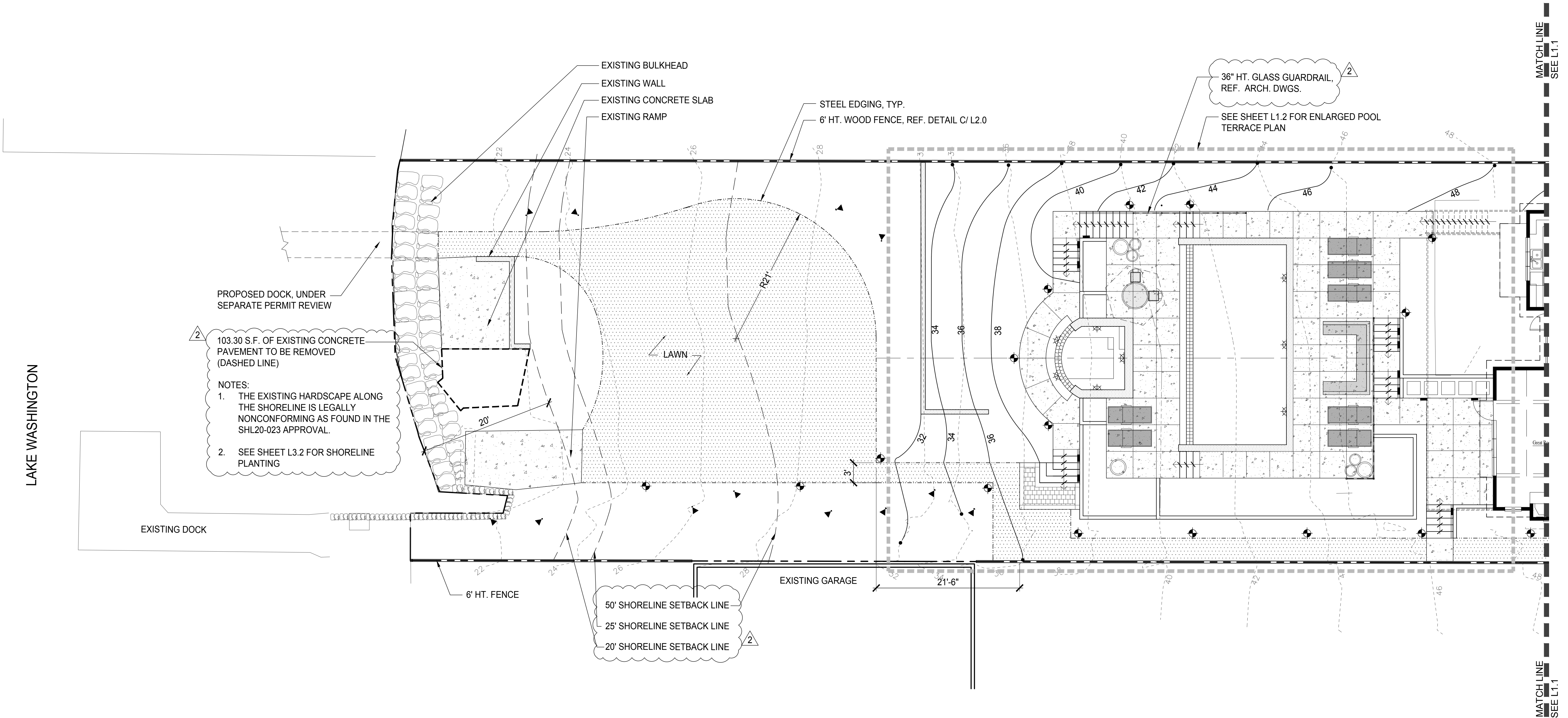
ISSUES:

NO.:	DATE:	DESCRIPTION:
1	05.13.20	PERMIT SUBMITTAL
2	07.24.20	REVISIONS
3	12.09.20	REVISIONS
4	12.22.20	REVIEW
5	03.15.21	REVISIONS
2	06.07.21	PERMIT RESUBMITTAL

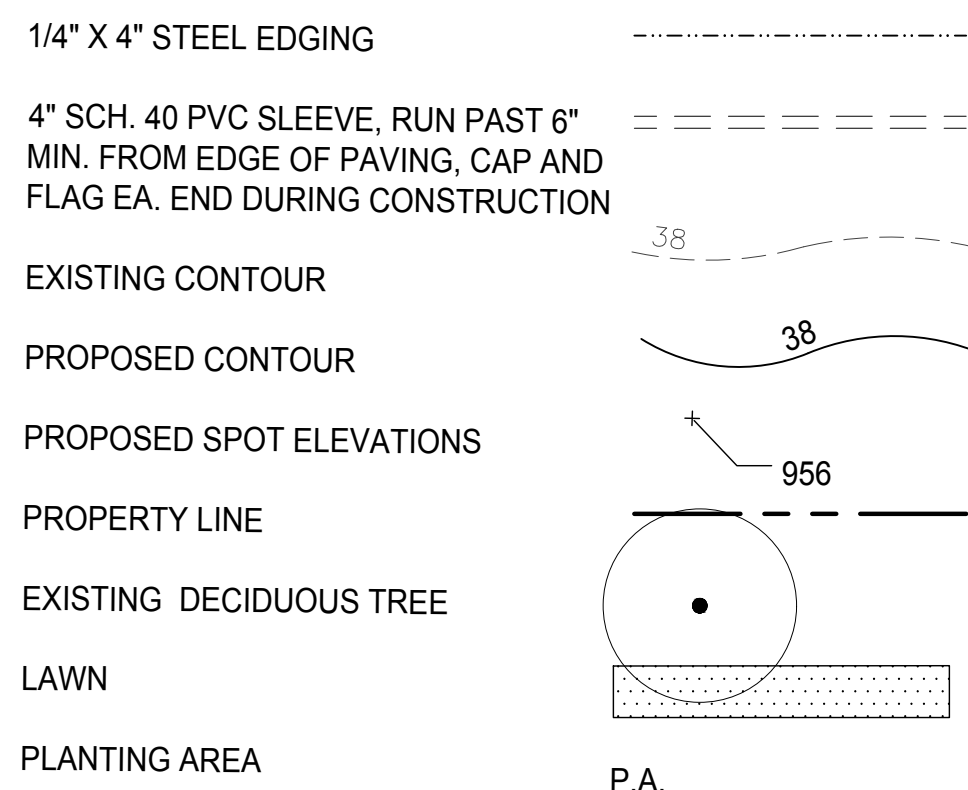
PROJECT #: 19.19

DRAWN: RB  
CHECKED: DW

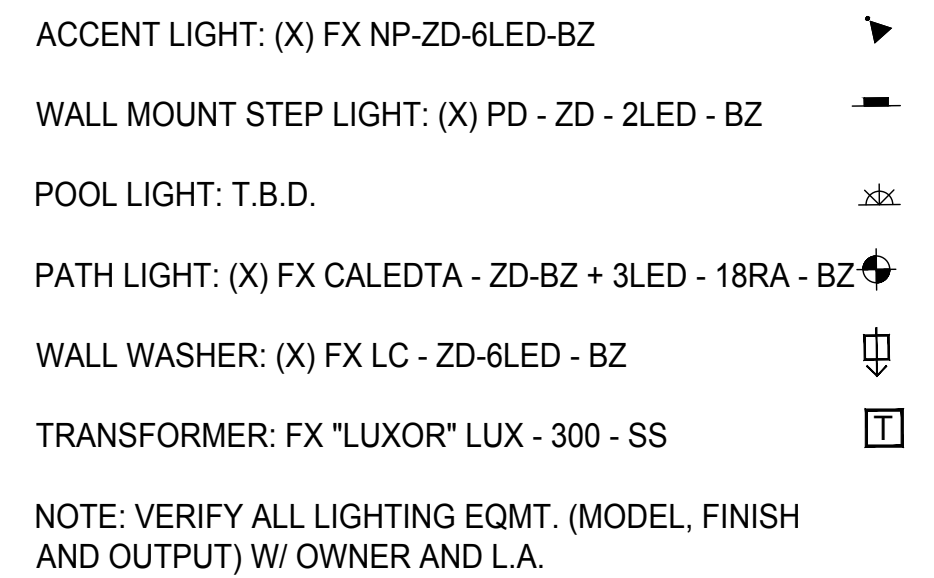
TITLE: LAYOUT PLAN  
WEST AREA  
SHEET: L1.0



**GENERAL LEGEND**



**LIGHTING LEGEND**



**LIGHTING NOTES**

- SUPPLY AND INSTALL OUTDOOR LIGHTING PER PLAN. PROVIDE ALL NECESSARY FIXTURES, WIRING, STAKES, TRANSFORMERS, ETC. TO IMPLEMENT PLAN. PROVIDE OWNER W/ A THREE RING BINDER MANUAL WITH ALL FIXTURE CUTSHEETS, WARRANTY INFORMATION, OPERATION MANUALS, AND AS BUILT PLAN OF SYSTEM. FOR LOW VOLTAGE LIGHTING, CONTRACTOR IS RESPONSIBLE FOR DETERMINING QUANTITY OF TRANSFORMERS REQUIRED. VERIFY LOCATIONS W/ LANDSCAPE ARCHITECT. LOW VOLTAGE LIGHTING TO BE SWITCHED WITH PHOTO-CELL ON/TIMER OFF OPERATION.
- VERIFY PLACEMENT OF ALL PATH & ACCENT LIGHTS IN FIELD W/ LANDSCAPE ARCHITECT PRIOR TO FINAL INSTALLATION.

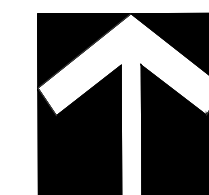
**GENERAL NOTES**

- VERIFY LAYOUT IN FIELD WITH LANDSCAPE ARCHITECT PRIOR TO START OF WORK

**GRADING AND DRAINAGE NOTES**

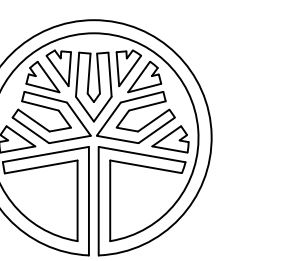
- PROVIDE ACCURATE AS-BUILT DRAWING OF DRAINAGE SYSTEM FOLLOWING CONSTRUCTION
- ESTABLISH THE FOLLOWING SUBGRADES:  
PLANTING AREAS: -12"-TO ALLOW FOR 10" TOPSOIL & 2" MULCH  
LAWN AREAS: -6"-TO ALLOW FOR 6" TOPSOIL
- SLOPE ALL PAVED SURFACES TO DRAIN @ MIN. 1%, MAX 2%
- VERIFY ALL FINISH GRADES IN FIELD WITH LANDSCAPE ARCHITECT

NOTE:  
PER MICC 19.02.020 (F)(3)(d) ALL JAPANESE KNOTWOOD (POLYGONUM CUSPIDATUM) & REGULATED CLASS A, REGULATED CLASS B, AND REGULATED CLASS C WEEDS IDENTIFIED ON THE KING COUNTY NOXIOUS WEED LIST, AS AMENDED, SHALL BE REMOVED FROM REQUIRED LANDSCAPING AREAS. NEW LANDSCAPING ASSOCIATED WITH NEW SINGLE-FAMILY HOME SHALL NOT INCORPORATE ANY WEEDS IDENTIFIED ON THE KING COUNTY NOXIOUS WEED LIST, AS AMENDED, PROVIDED THAT REMOVAL SHALL NOT BE REQUIRED IF THE REMOVAL WILL RESULT IN INCREASED SLOPE INSTABILITY OR RISK OF LANDSLIDE OR EROSION.



SCALE: 1/8" = 1' - 0"

**PETRIE RESIDENCE**  
2431 60th Avenue SE  
Mercer Island, WA 98075



STATE OF WASHINGTON  
REGISTERED  
LANDSCAPE ARCHITECT

DARWIN D. WEBB  
CERTIFICATE NO. 564

ISSUES:

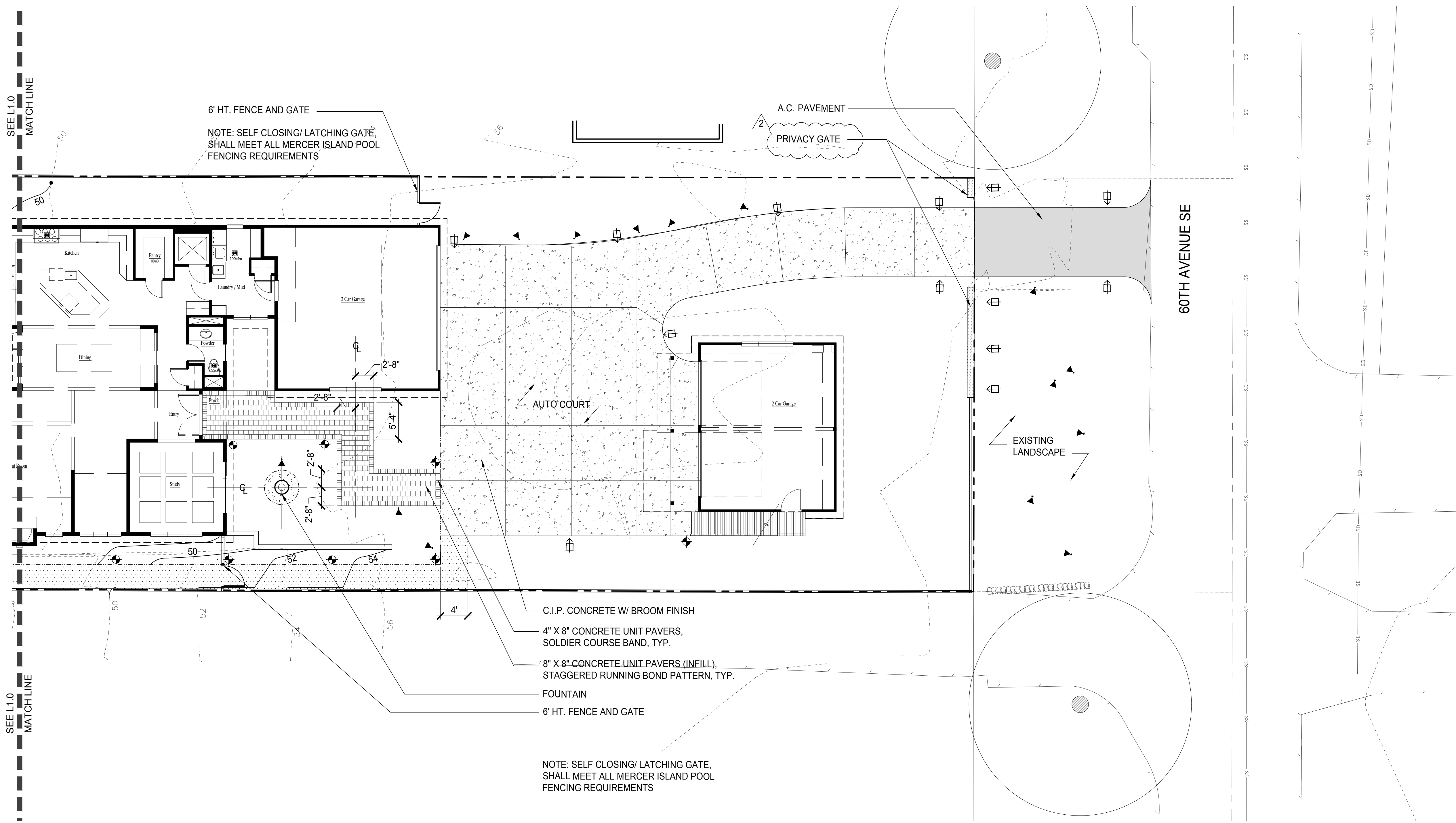
NO.:	DATE:	DESCRIPTION:
1	05.13.20	PERMIT SUBMITTAL
2	07.24.20	REVISIONS
3	12.09.20	REVISIONS
4	12.22.20	REVIEW
5	03.15.21	REVISIONS
△	06.07.21	PERMIT RESUBMITTAL

PROJECT #: 19.19

DRAWN: RB  
CHECKED: DW

TITLE: LAYOUT PLAN  
EAST AREA

SHEET: L1.1



**GENERAL LEGEND**

- 1/4" X 4" STEEL EDGING
- 4" SCH. 40 PVC SLEEVE, RUN PAST 6" MIN. FROM EDGE OF PAVING, CAP AND FLAG EA. END DURING CONSTRUCTION
- EXISTING CONTOUR
- PROPOSED CONTOUR
- PROPOSED SPOT ELEVATIONS
- PROPERTY LINE
- EXISTING DECIDUOUS TREE
- LAWN
- PLANTING AREA

**LIGHTING LEGEND**

- ACCENT LIGHT: (X) FX NP-ZD-6LED-BZ
  - WALL MOUNT STEP LIGHT: (X) PD - ZD - 2LED - BZ
  - POOL LIGHT: T.B.D.
  - PATH LIGHT: (X) FX CALEDTA - ZD-BZ + 3LED - 18RA - BZ
  - WALL WASHER: (X) FX LC - ZD-6LED - BZ
  - TRANSFORMER: FX "LUXOR" LUX - 300 - SS
- NOTE: VERIFY ALL LIGHTING EQMT. (MODEL, FINISH AND OUTPUT) W/ OWNER AND L.A.

**LIGHTING NOTES**

- SUPPLY AND INSTALL OUTDOOR LIGHTING PER PLAN. PROVIDE ALL NECESSARY FIXTURES, WIRING, STAKES, TRANSFORMERS, ETC. TO IMPLEMENT PLAN. PROVIDE OWNER W/ A THREE RING BINDER MANUAL WITH ALL FIXTURE CUTSHEETS, WARRANTY INFORMATION, OPERATION MANUALS, AND AS BUILT PLAN OF SYSTEM.
- FOR LOW VOLTAGE LIGHTING, CONTRACTOR IS RESPONSIBLE FOR DETERMINING QUANTITY OF TRANSFORMERS REQUIRED. VERIFY LOCATIONS W/ LANDSCAPE ARCHITECT. LOW VOLTAGE LIGHTING TO BE SWITCHED WITH PHOTO-CELL ON/TIMER OFF OPERATION.
- VERIFY PLACEMENT OF ALL PATH & ACCENT LIGHTS IN FIELD W/ LANDSCAPE ARCHITECT PRIOR TO FINAL INSTALLATION.

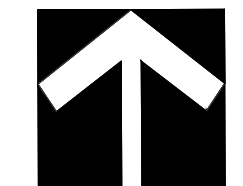
**GENERAL NOTES**

- VERIFY LAYOUT IN FIELD WITH LANDSCAPE ARCHITECT PRIOR TO START OF WORK

**GRADING AND DRAINAGE NOTES**

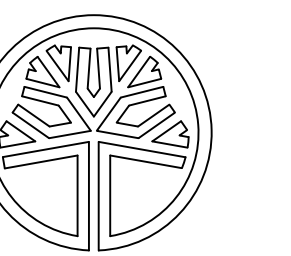
- PROVIDE ACCURATE AS-BUILT DRAWING OF DRAINAGE SYSTEM FOLLOWING CONSTRUCTION
- ESTABLISH THE FOLLOWING SUBGRADES:  
PLANTING AREAS: -12" TO ALLOW FOR 10" TOPSOIL & 2" MULCH  
LAWN AREAS: -6" TO ALLOW FOR 6" TOPSOIL
- SLOPE ALL PAVED SURFACES TO DRAIN @ MIN. 1%, MAX 2%
- VERIFY ALL FINISH GRADES IN FIELD WITH LANDSCAPE ARCHITECT

NOTE:  
PER MICC 19.02.020 (F)(3)(d) ALL JAPANESE KNOTWOOD (POLYGONUM CUSPIDATUM) & REGULATED CLASS A, REGULATED CLASS B, AND REGULATED CLASS C WEEDS IDENTIFIED ON THE KING COUNTY NOXIOUS WEED LIST, AS AMENDED, SHALL BE REMOVED FROM REQUIRED LANDSCAPING AREAS. NEW LANDSCAPING ASSOCIATED WITH NEW SINGLE-FAMILY HOME SHALL NOT INCORPORATE ANY WEEDS IDENTIFIED ON THE KING COUNTY NOXIOUS WEED LIST, AS AMENDED, PROVIDED THAT REMOVAL SHALL NOT BE REQUIRED IF THE REMOVAL WILL RESULT IN INCREASED SLOPE INSTABILITY OR RISK OF LANDSLIDE OR EROSION.



4' 8' 16' 32'  
SCALE: 1/8" = 1' - 0"

PETRIE RESIDENCE  
2431 60th Avenue SE  
Mercer Island, WA 98075



STATE OF WASHINGTON  
REGISTERED  
LANDSCAPE ARCHITECT

DARWIN D. WEBB  
CERTIFICATE NO. 564

ISSUES:

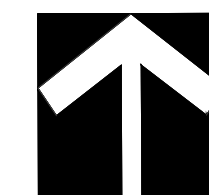
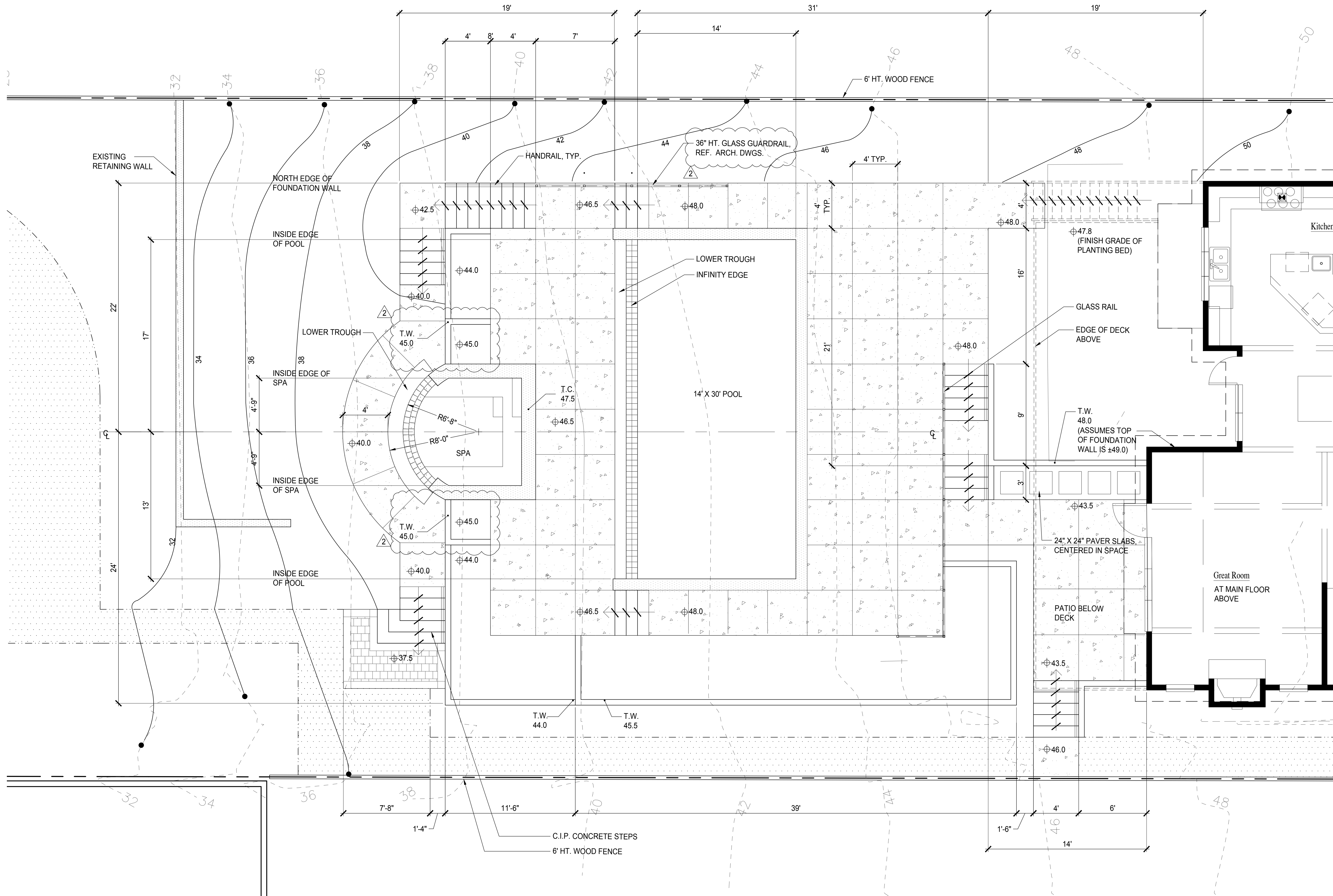
NO.	DATE	DESCRIPTION
1	05.13.20	PERMIT SUBMITTAL
2	07.24.20	REVISIONS
3	12.09.20	REVISIONS
4	12.22.20	REVIEW
5	03.15.21	REVISIONS
△	06.07.21	PERMIT RESUBMITTAL

PROJECT #: 19.19

DRAWN: RB  
CHECKED: DW

TITLE: POOL TERRACE  
PLAN

SHEET: L1.2



SCALE: 1/4" = 1' - 0"



DARWIN D. WEBB  
CERTIFICATE NO. 564

ISSUES:

NO.:	DATE:	DESCRIPTION:
1	05.13.20	PERMIT SUBMITTAL
2	07.24.20	REVISIONS
3	12.09.20	REVISIONS
4	12.22.20	REVIEW
5	03.15.21	REVISIONS
2	06.07.21	PERMIT RESUBMITTAL

PROJECT #: 19.19

DRAWN: RB  
CHECKED: DW

TITLE: PLANTING PLAN  
WEST AREA

SHEET: L3.0

**TREE REPLACEMENT**

REMOVED EXCEPTIONAL TREES REQUIRING REPLACEMENT:

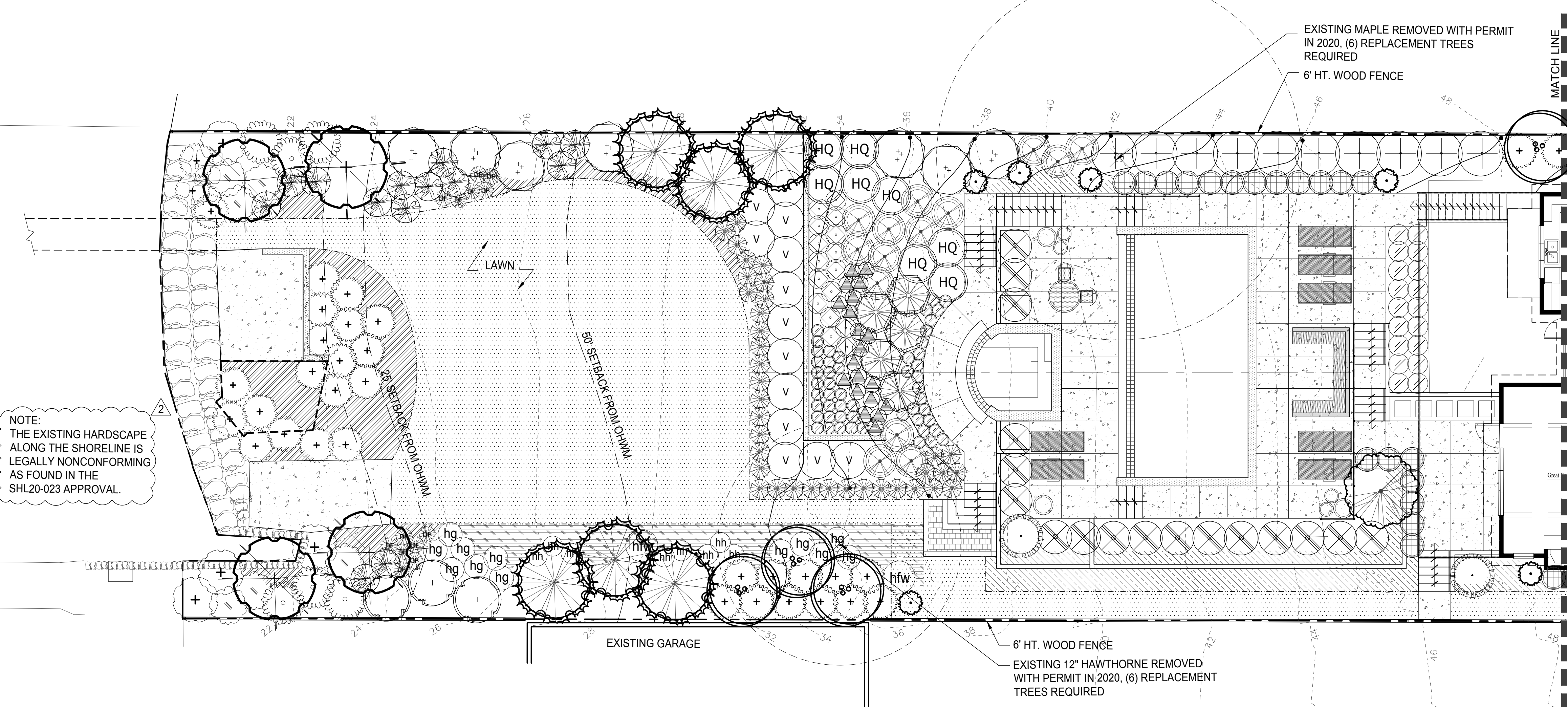
- (1) MAPLE TREE = (6) REPLACEMENT TREES ( REMOVED IN 2020 UNDER SEPARATE PERMIT)
- (1) 12" HAWTHORNE TREE = (6) REPLACEMENT TREES (REMOVED IN 2020 UNDER SEPARATE PERMIT)

REPLACEMENT TREES:

- (6) PINUS CONTORTA/SHORE PINE, 6'-7' HT, (PNW NATIVE SPECIES).
- (3) PICEA OMORICA/SERBIAN SPRUCE, 2" CALIPER, (NON-NATIVE ORNAMENTAL CONIFER).
- (3) PYRUS CALLERYANA 'CHANTICLEER'/ FLOWERING PEAR, 2" CAL. (NON-NATIVE ORNAMENTAL DECIDUOUS TREE).

REFER TO UPDATED TREE REPORT DATED JANUARY 5, 2021  
PREPARED BY TOM HANSON, ARBORINFO LLC.

NOTE:  
THE EXISTING HARDSCAPE  
ALONG THE SHORELINE IS  
LEGALLY NONCONFORMING  
AS FOUND IN THE  
SHL20-023 APPROVAL.



**PLANT SCHEDULE**

TREES

SYMBOL	BOTANICAL NAME/ COMMON NAME	SIZE	QTY.	REMARKS
80	ACER CIRCINATUM 'PACIFIC FIRE' PACIFIC FIRE VINE MAPLE	6'-7' HT.	14	MULTI-STEMMED
+	ACER PALMATUM 'DISSECTUM' GREEN LACELEAF JAPANESE MAPLE	4'-5' SP.	1	SPECIMEN QUALITY
+	ACER PALMATUM JAPANESE MAPLE	2-1/2" CAL.	1	SPECIMEN QUALITY, VARY T.B.D.
+	CORYLUS CORNUTA WESTERN HAZELNUT	4'-5' SP.	3	
+	CUPRESSUS MACROCARPA 'GOLDCREST' GOLDCREST CYPRESS	3'-5' HT.	7	MULTIPLE SIZES, VERIFY W/ L.A.
+	GINKGO BILOBA 'PRINCETON SENTRY' PRINCETON SENTRY GINKGO TREE	2" CAL.	1	SPECIMEN QUALITY, VARY VARIETY
+	PICEA OMORICA SERBIAN SPRUCE	8'-9' HT.	3	REPLACEMENT TREE ORNAMENTAL
+	PINUS CONTORTA SHORE PINE	6'-7' HT.	6	REPLACEMENT TREE NATIVE
+	PYRUS CALLERYANA 'CHANTICLEAR' CHANTICLEAR FLOWERING PEAR	2" CAL.	3	REPLACEMENT TREE ORNAMENTAL

NOTE: LANDSCAPE CONTRACTOR TO VERIFY PLANT QUANTITIES ON PLAN. REPORT ANY DISCREPANCIES BETWEEN PLAN AND PLANT SCHEDULE TO L.A.

NOTE:  
PER MICC 19.02.020 (F)(3)(d) ALL JAPANESE KNOTWOOD (POLYGONUM CUSPIDATUM) & REGULATED CLASS A, REGULATED CLASS B, AND REGULATED CLASS C, WEEDS IDENTIFIED ON THE KING COUNTY NOXIOUS WEED LIST, AS AMENDED, SHALL BE REMOVED FROM REQUIRED LANDSCAPING AREAS. NEW LANDSCAPING ASSOCIATED WITH NEW SINGLE-FAMILY HOME SHALL NOT INCORPORATE ANY WEEDS IDENTIFIED ON THE KING COUNTY NOXIOUS WEED LIST, AS AMENDED, PROVIDED THAT REMOVAL SHALL NOT BE REQUIRED IF THE REMOVAL WILL RESULT IN INCREASED SLOPE INSTABILITY OR RISK OF LANDSLIDE OR EROSION.

**PLANT SCHEDULE**

SHRUBS

SYMBOL	BOTANICAL NAME/ COMMON NAME	SIZE	QTY.	REMARKS
+	ARBUS UNEDO 'COMPACTA' COMPACT STRAWBERRY TREE	36"		
+	CORNUS SERICEA REDTWIG DOGWOOD	24"		
+	GAULTHERIA SHALLON SALAL	1 GAL.		
+	HOLIDISCUS DISCOLOR OCEANSPRAY	1 GAL.		
HTS	HYDRANGEA MACROPHYLLA 'TWIST-N-SHOUT' TWIST-N-SHOUT HYDRANGEA	30"		
HQ	HYDRANGEA QUERCIFOLIA 'SNOW QUEEN' SNOW QUEEN OAKLEAF HYDRANGEA	36"		
+	NANDINA DOMESTICA 'GULF STREAM' GULF STEAM HEAVENLY BAMBOO	24"		
+	PIERIS JAPONICA 'KATSURA' KATSURA ANDROMEDA	36"		
+	PINUS MUGO 'PUMILIO' DWARF MUGO PINE	21"		
+	PITTIOSPORUM TOBIRA 'CREME DE MINT' CREME DE MINT DWARF PITTIOSPORUM	18"		
+	PRUNUS LUSITANICA PORTUGAL LAUREL	36"		
+	RHODODENDRON 'LUCY LOU' LUCY LOU RHODODENDRON	24"		
+	RHODODENDRON 'RAMAPO' RAMAPO RHODODENDRON	24"		
+	RIBES SANGUINEUM RED FLOWERING CURRANT	1 GAL.		
+	SALIX SCOULERIANA SCOULER'S WILLOW	1 GAL.		
+	TAXUS BACCATA 'REPANDENS' SPREADING ENGLISH YEW	24"		
+	VIBURNUM DAVIDII DAVID'S VIBURNUM	24"		
VSS	VIBURNUM P. TOMENTOSUM 'SUMMER SNOWFLAKE' SUMMER SNOWFLAKE VIBURNUM	30"		
+	VIBURNUM TINUS 'SPRING BOUQUET' LAURISTINUS	30"		

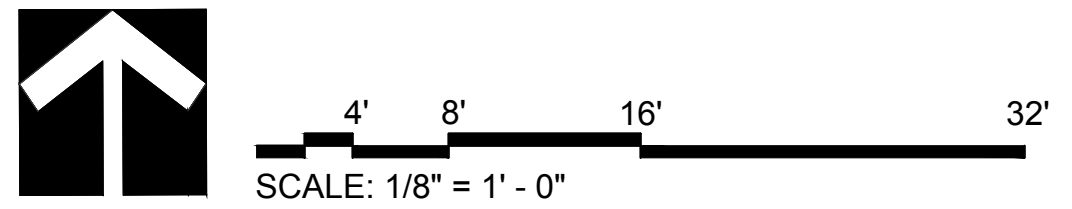
NOTE: LANDSCAPE CONTRACTOR TO VERIFY PLANT QUANTITIES ON PLAN. REPORT ANY DISCREPANCIES BETWEEN PLAN AND PLANT SCHEDULE TO L.A.

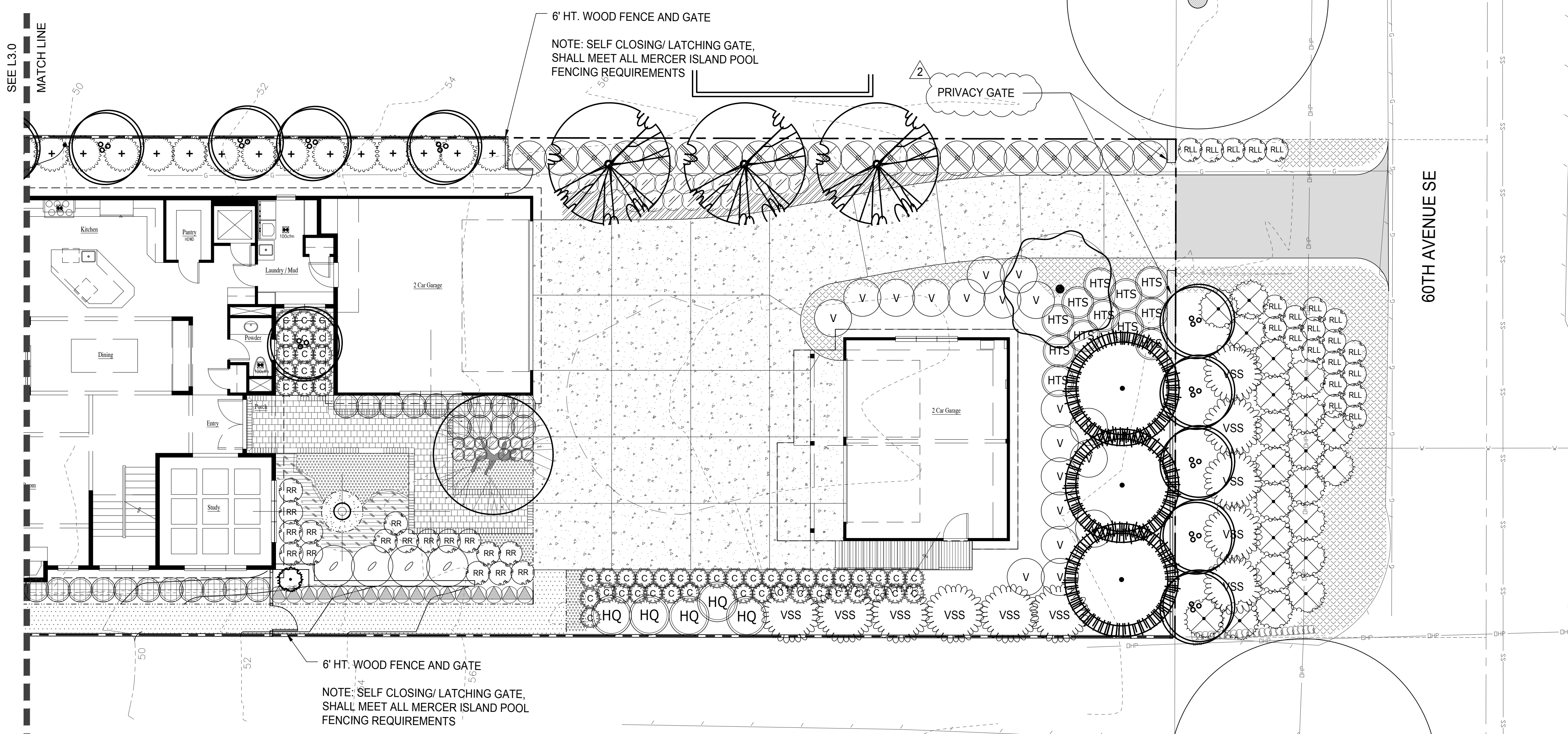
**PLANT SCHEDULE**

GRASSES, PERENNIALS AND GROUNDCOVERS

SYMBOL	BOTANICAL NAME/ COMMON NAME	SIZE	QTY.	REMARKS
ARCTOSTAPHYLOS UVA-URSI KINNICKINICK	4" POT		SPACING @ 18" OC	
BLECHNUM SPICANT DEER FERN	1 GAL.			
CALLUNA VULGARIS 'SILVER KNIGHT' SILVER KNIGHT SCOTCH HEATHER	1 GAL.			
CALLUNA VULGARIS 'WINTER CHOCOLATE' WINTER CHOCOLATE SCOTCH HEATHER	1 GAL.			
CAREX MORROWII 'ICE DANCE' VARIEGATED JAPANESE SEDGE	1 GAL.			
CEANOTHUS GLORIOSIS POINT REYES CEANOTHUS	1 GAL.		SPACING @ 30" OC	
ERICA CINEREA 'MEDITERRANEAN PINK' MEDITERRANEAN PINK HEATH	1 GAL.			
GAULTHERIA PROCUMBENS WINTERGREEN	4" POT		SPACING @ 18" OC	
HOSTA 'FRANCIS WILLIAMS' FRANCIS WILLIAMS PLANTAIN LILY	1 GAL.		VERIFY VARIETY	
HOSTA 'GUACAMOLE' GUACAMOLE PLANTAIN LILY	1 GAL.		VERIFY VARIETY	
HOSTA 'HALCYON' HALCYON PLANTAIN LILY	1 GAL.		VERIFY VARIETY	
LIRIOPE MUSCARI BIG BLUE LILYTURF	1 GAL.		SPACING @ 18" OC	
MISCANTHUS SINENSIS 'MORNING LIGHT' MORNING LIGHT MAIDEN GRASS	1 GAL.			
PACHYSANDRA TERMINALIS JAPANESE SPURGE	4" POT		SPACING @ 15" OC	
PENNISETUM ALOPECUROIDES 'HAMELN' DWARF FOUNTAIN GRASS	1 GAL.			
PHORMIUM TENAX SP. NEW ZEALAND FLAX (VARIETY T.B.D.)	5 GAL.			
POLYSTICHUM MUNITUM SWORD FERN	1 GAL.			

NOTE: LANDSCAPE CONTRACTOR TO VERIFY PLANT QUANTITIES ON PLAN. REPORT ANY DISCREPANCIES BETWEEN PLAN AND PLANT SCHEDULE TO L.A.





**TREE REPLACEMENT**

REMOVED EXCEPTIONAL TREES REQUIRING REPLACEMENT:

- (1) MAPLE TREE = (6) REPLACEMENT TREES ( REMOVED IN 2020 UNDER SEPARATE PERMIT)
- (1) 12" HAWTHORNE TREE = (6) REPLACEMENT TREES (REMOVED IN 2020 UNDER SEPARATE PERMIT)

REPLACEMENT TREES:

- (6) PINUS CONTORTA/SHORE PINE, 6'-7' HT, (PNW NATIVE SPECIES).
- (3) PICEA OMORICA/SERBIAN SPRUCE, 2" CALIPER, (NON-NATIVE ORNAMENTAL CONIFER).
- (3) PYRUS CALLERYANA 'CHANTICLEER'/ FLOWERING PEAR, 2" CAL. (NON-NATIVE ORNAMENTAL DECIDUOUS TREE).

REFER TO UPDATED TREE REPORT DATED JANUARY 5, 2021 PREPARED BY TOM HANSON, ARBORINFO LLC.

**Petrie**  
19.19

**Darwin Webb**  
LANDSCAPE ARCHITECTS P.S.  
485 Rainier Blvd N #103B  
Issaquah, WA 98027  
P. 425.391.6946  
F. 425.391.1292  
www.darwinwebb.com

**PLANT SCHEDULE**

**TREES**

SYMBOL	BOTANICAL NAME/ COMMON NAME	SIZE	QTY.	REMARKS
80	ACER CIRCINATUM 'PACIFIC FIRE' PACIFIC FIRE VINE MAPLE	6'-7' HT.	14	MULTI-STEMMED
	ACER PALMATUM 'DISSECTUM' GREEN LACELEAF JAPANESE MAPLE	4'-5' SP.	1	SPECIMEN QUALITY
	ACER PALMATUM JAPANESE MAPLE	2-1/2" CAL.	1	SPECIMEN QUALITY, VERIFY T.B.D.
	CORYLUS CORNUTA WESTERN HAZELNUT	4'-5' SP.	3	
	CUPRESSUS MACROCARPA 'GOLDCREST' GOLDCREST CYPRESS	3'-5' HT.	7	MULTIPLE SIZES, VERIFY W/ L.A.
	GINKGO BILOBA 'PRINCETON SENTRY' PRINCETON SENTRY GINKGO TREE	2" CAL.	1	SPECIMEN QUALITY, VERIFY VARIETY
	PICEA OMORICA SERBIAN SPRUCE	8'-9' HT.	3	REPLACEMENT TREE ORNAMENTAL
	PINUS CONTORTA SHORE PINE	6'-7' HT.	6	REPLACEMENT TREE NATIVE
	PYRUS CALLERYANA 'CHANTICLEER' CHANTICLEER FLOWERING PEAR	2" CAL.	3	REPLACEMENT TREE ORNAMENTAL

NOTE: LANDSCAPE CONTRACTOR TO VERIFY PLANT QUANTITIES ON PLAN. REPORT ANY DISCREPANCIES BETWEEN PLAN AND PLANT SCHEDULE TO L.A.

NOTE: PER MICC 19.02.020 (F)(3)(d) ALL JAPANESE KNOTWOOD (POLYGONUM CUSPIDATUM) & REGULATED CLASS A, REGULATED CLASS B, AND REGULATED CLASS C WEEDS IDENTIFIED ON THE KING COUNTY NOXIOUS WEED LIST, AS AMENDED, SHALL BE REMOVED FROM REQUIRED LANDSCAPING AREAS. NEW LANDSCAPING ASSOCIATED WITH NEW SINGLE-FAMILY HOME SHALL NOT INCORPORATE ANY WEEDS IDENTIFIED ON THE KING COUNTY NOXIOUS WEED LIST, AS AMENDED, PROVIDED THAT REMOVAL SHALL NOT BE REQUIRED IF THE REMOVAL WILL RESULT IN INCREASED SLOPE INSTABILITY OR RISK OF LANDSLIDE OR EROSION.

**PLANT SCHEDULE**

**SHRUBS**

SYMBOL	BOTANICAL NAME/ COMMON NAME	SIZE	QTY.	REMARKS
+	ARBUS UNEDO 'COMPACTA' COMPACT STRAWBERRY TREE	36"		
I	CORNUS SERICEA REDTWIG DOGWOOD	24"		
+	GAULTHERIA SHALLOON SALAL	1 GAL.		
	HOLIDISCUS DISCOLOR OCEANSPRAY	1 GAL.		
HTS	HYDRANGEA MACROPHYLLA 'TWIST-N-SHOUT' TWIST-N-SHOUT HYDRANGEA	30"		
HQ	HYDRANGEA QUERCIFOLIA 'SNOW QUEEN' SNOW QUEEN OAKLEAF HYDRANGEA	36"		
	NANDINA DOMESTICA 'GULF STREAM' GULF STREAM HEAVENLY BAMBOO	24"		
	PIERIS JAPONICA 'KATSURA' KATSURA ANDROMEDA	36"		
	PINUS MUGO 'PUMILIO' DWARF MUGO PINE	21"		
	PITTOSPORUM TOBIRA 'CREME DE MINT' CREME DE MINT DWARF PITTOSPORUM	18"		
	PRUNUS LUSITANICA PORTUGAL LAUREL	36"		
	RHODODENDRON 'LUCY LOU' LUCY LOU RHODODENDRON	24"		
	RHODODENDRON 'RAMAPO' RAMAPO RHODODENDRON	24"		
	RIBES SANGUINEUM RED FLOWERING CURRANT	1 GAL.		
+	SALIX SCOULERIANA SCOULER'S WILLOW	1 GAL.		
+	TAXUS BACCATA 'REPANDENS' SPREADING ENGLISH YEW	24"		
V	VIBURNUM DAVIDII DAVID'S VIBURNUM	24"		
V	VIBURNUM P. TOMENTOSUM 'SUMMER SNOWFLAKE' SUMMER SNOWFLAKE VIBURNUM	30"		
VSS	VIBURNUM TINUS 'SPRING BOUQUET' LAURISTINUS	30"		

NOTE: LANDSCAPE CONTRACTOR TO VERIFY PLANT QUANTITIES ON PLAN. REPORT ANY DISCREPANCIES BETWEEN PLAN AND PLANT SCHEDULE TO L.A.

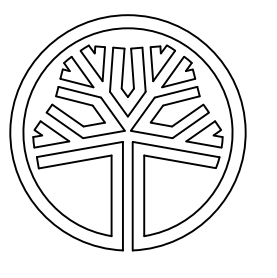
**PLANT SCHEDULE**

**GRASSES, PERENNIALS AND GROUNDCOVERS**

SYMBOL	BOTANICAL NAME/ COMMON NAME	SIZE	QTY.	REMARKS
	ARCTOSTAPHYLOS UVA-URSI KINNICKINICK	4" POT		SPACING @ 18" OC
	BLECHNUM SPICANT DEER FERN	1 GAL.		
	CALLUNA VULGARIS 'SILVER KNIGHT' SILVER KNIGHT SCOTCH HEATHER	1 GAL.		
	CALLUNA VULGARIS 'WINTER CHOCOLATE' WINTER CHOCOLATE SCOTCH HEATHER	1 GAL.		
	CAREX MORROWII 'ICE DANCE' VARIEGATED JAPANESE SEDGE	1 GAL.		
	CEANOTHUS GLORIOSUS POINT REYES CEANOTHUS	1 GAL.		SPACING @ 30" OC
	ERICA CINEREA 'MEDITERRANEAN PINK' MEDITERRANEAN PINK HEATH	1 GAL.		
	GAULTHERIA PROCUMBENS WINTERGREEN	4" POT		SPACING @ 18" OC
hfw	HOSTA 'FRANCIS WILLIAMS' FRANCIS WILLIAMS PLANTAIN LILY	1 GAL.		VERIFY VARIETY
hg	HOSTA 'GUACAMOLE' GUACAMOLE PLANTAIN LILY	1 GAL.		VERIFY VARIETY
hh	HOSTA 'HALCYON' HALCYON PLANTAIN LILY	1 GAL.		VERIFY VARIETY
	LIRIOPE MUSCARI BIG BLUE LILYTURF	1 GAL.		SPACING @ 18" OC
	MISCANTHUS SINENSIS 'MORNING LIGHT' MORNING LIGHT MAIDEN GRASS	1 GAL.		
	PACHYSANDRA TERMINALIS JAPANESE SPURGE	4" POT		SPACING @ 15" OC
	PENNISSETUM ALOPECUROIDES 'HADELN' DWARF FOUNTAIN GRASS	1 GAL.		
	PHORMIUM TENAX SP. NEW ZEALAND FLAX (VARIETY T.B.D.)	5 GAL.		
	POLYSTICHUM MUNITUM SWORD FERN	1 GAL.		

NOTE: LANDSCAPE CONTRACTOR TO VERIFY PLANT QUANTITIES ON PLAN. REPORT ANY DISCREPANCIES BETWEEN PLAN AND PLANT SCHEDULE TO L.A.

**PETRIE RESIDENCE**  
2431 60th Avenue SE  
Mercer Island, WA 98075



DARWIN D. WEBB  
CERTIFICATE NO. 564

ISSUES:

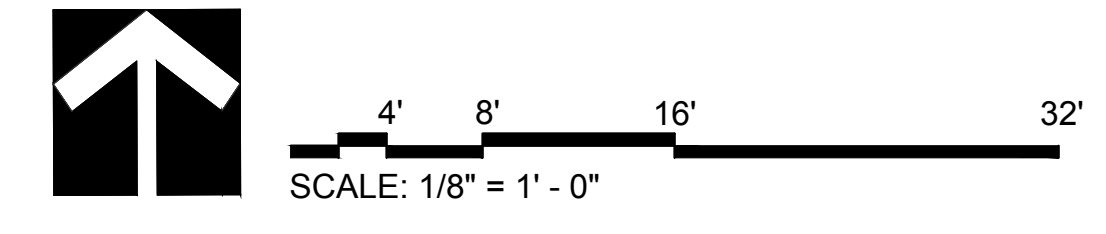
NO.:	DATE:	DESCRIPTION:
1	05.13.20	PERMIT SUBMITTAL
2	07.24.20	REVISIONS
3	12.09.20	REVISIONS
4	12.22.20	REVIEW
5	03.15.21	REVISIONS
2	06.07.21	PERMIT RESUBMITTAL

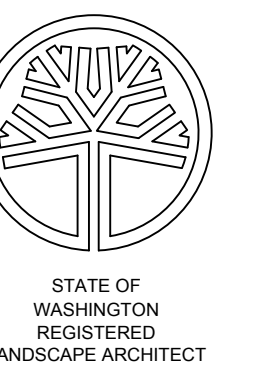
PROJECT #: 19.19

DRAWN: RB  
CHECKED: DW

TITLE: PLANTING PLAN  
EAST AREA

SHEET: **L3.1**





DARWIN D. WEBB  
CERTIFICATE NO. 564

ISSUES:

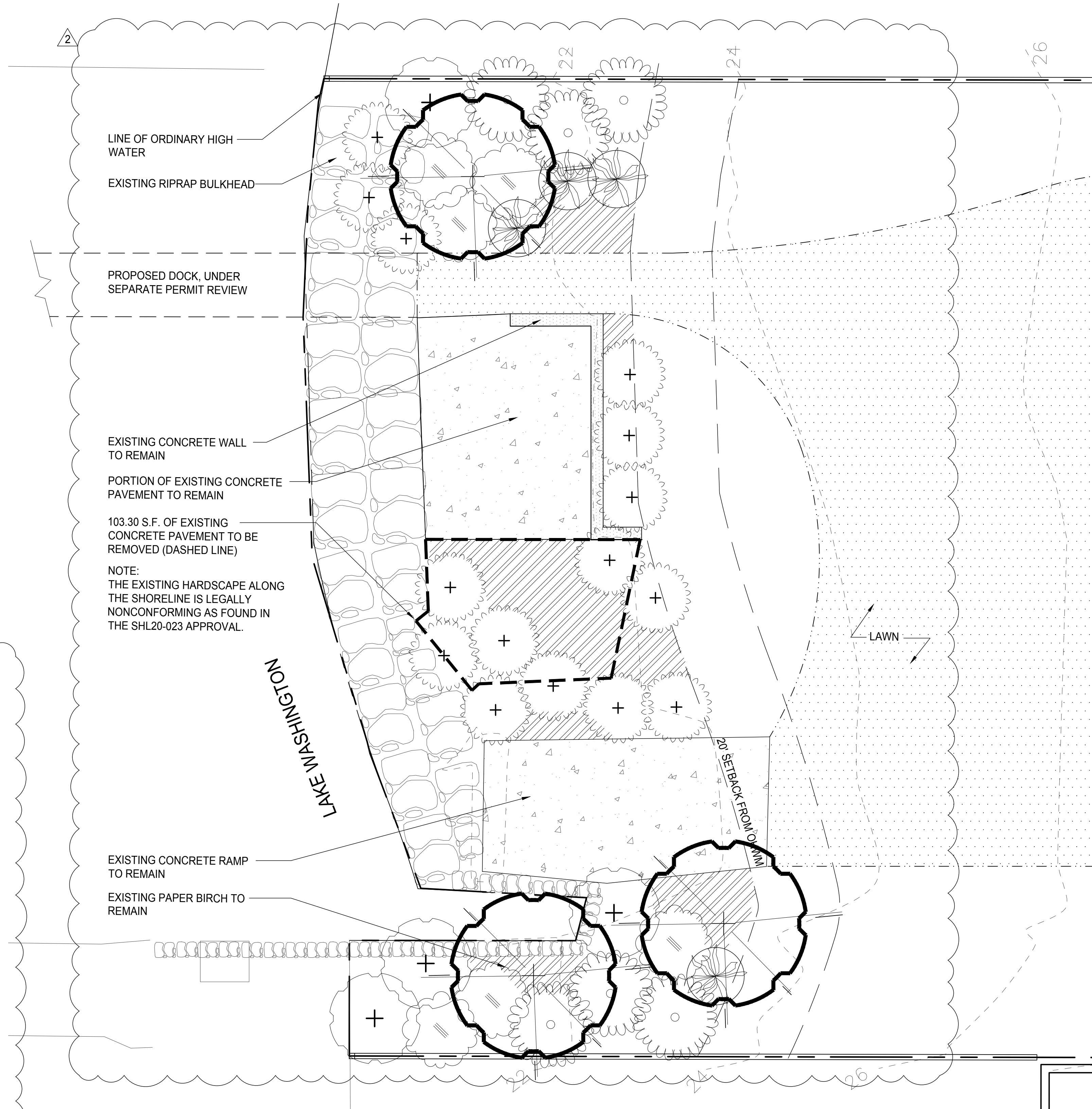
NO.:	DATE:	DESCRIPTION:
1	05.13.20	PERMIT SUBMITTAL
2	07.24.20	REVISIONS
3	12.09.20	REVISIONS
4	12.22.20	REVIEW
5	03.15.21	REVISIONS
2	06.07.21	PERMIT RESUBMITTAL

PROJECT #: 19.19

DRAWN: RB  
CHECKED: DW

TITLE: SHORELINE  
PLANTING PLAN

SHEET: L3.2



**PLANT SCHEDULE**

**TREES**

SYMBOL	BOTANICAL NAME/ COMMON NAME	SIZE	QTY.	REMARKS
	CORYLUS CORNUTA WESTERN HAZELNUT	4'-5' SP.	3	

**SHRUBS**

	GAULTHERIA SHALLON SALAL	1 GAL.	15	
	HOLODISCUS DISCOLOR OCEANSPRAY	1 GAL.	6	
	RIBES SANGUINEUM RED FLOWERING CURRANT	1 GAL.	6	
	SALIX SCOULERIANA SCOULER'S WILLOW	1 GAL.	4	

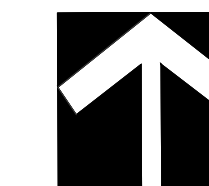
**PERENNIALS AND GROUNDCOVERS**

	ARCTOSTAPHYLOS UVA-URSI KINNIKINNICK	4" POT	65	SPACING @ 18" OC
	POLYSTICHUM MUNITUM SWORD FERN	1 GAL.	4	

**AREA CALCULATIONS**

TOATL AREA BETWEEN OHWM AND 20' SETBACK = 1,210.67 S.F.  
1,210.67 X .751 = 909.21 S.F. REQUIRED NATIVE VEGETATION

TOTAL EXISTING HARDSCAPE	388.08 S.F.
TOTAL HARDSCAPE REMOVED	103.30 S.F.
TOTAL HARDSCAPE REMAINING	284.78 S.F.
TOTAL PROPOSED NATIVE VEGETATION (76.48%)	925.89 S.F.



SCALE: 1/4" = 1' - 0"